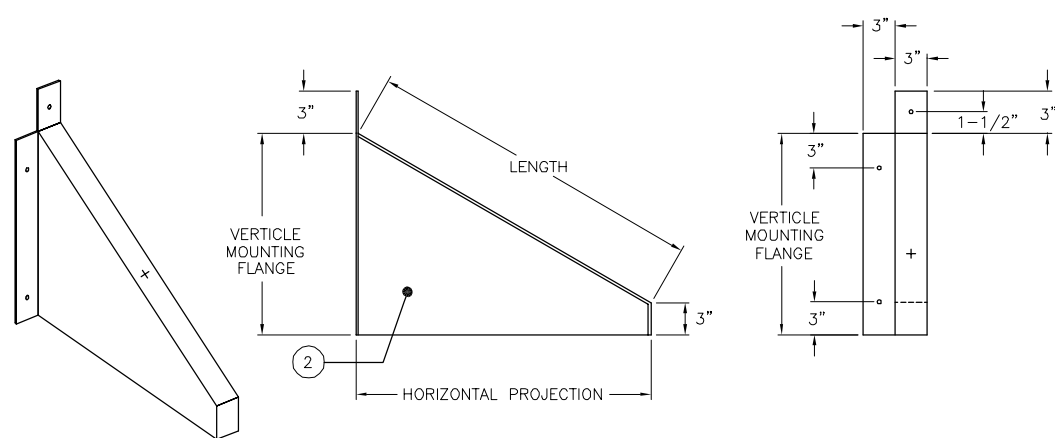
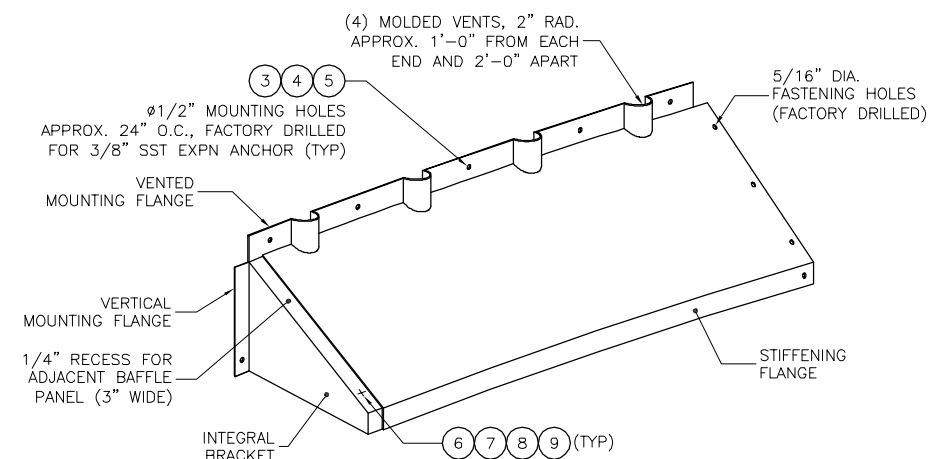


**INSTALLATION HARDWARE**

(NOT TO SCALE)

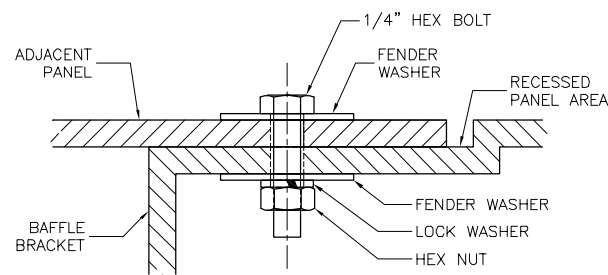


**FREE-END BRACKET**



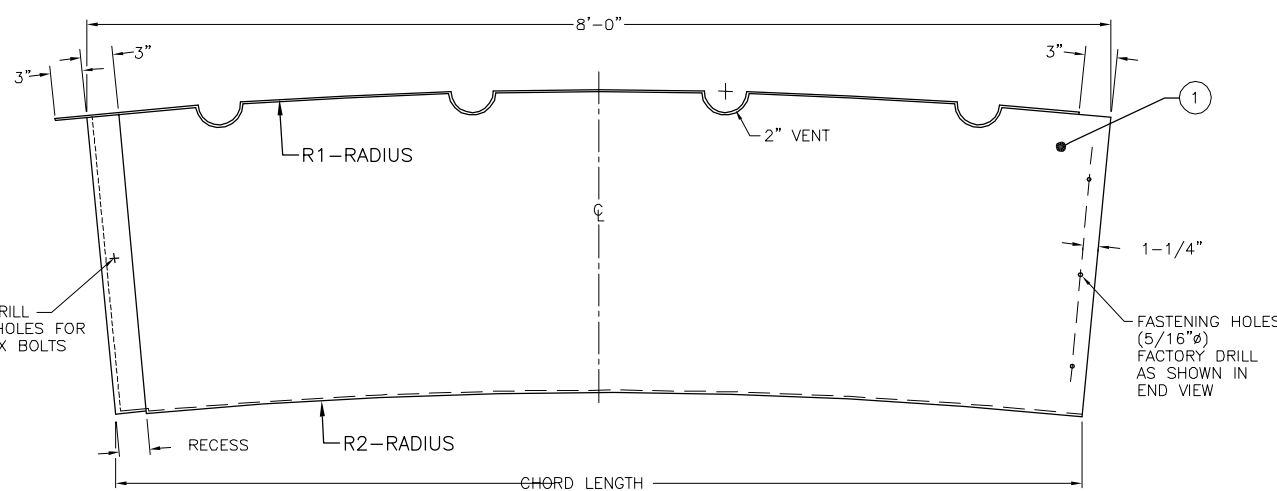
**PERSPECTIVE VIEW**

(NOT TO SCALE)



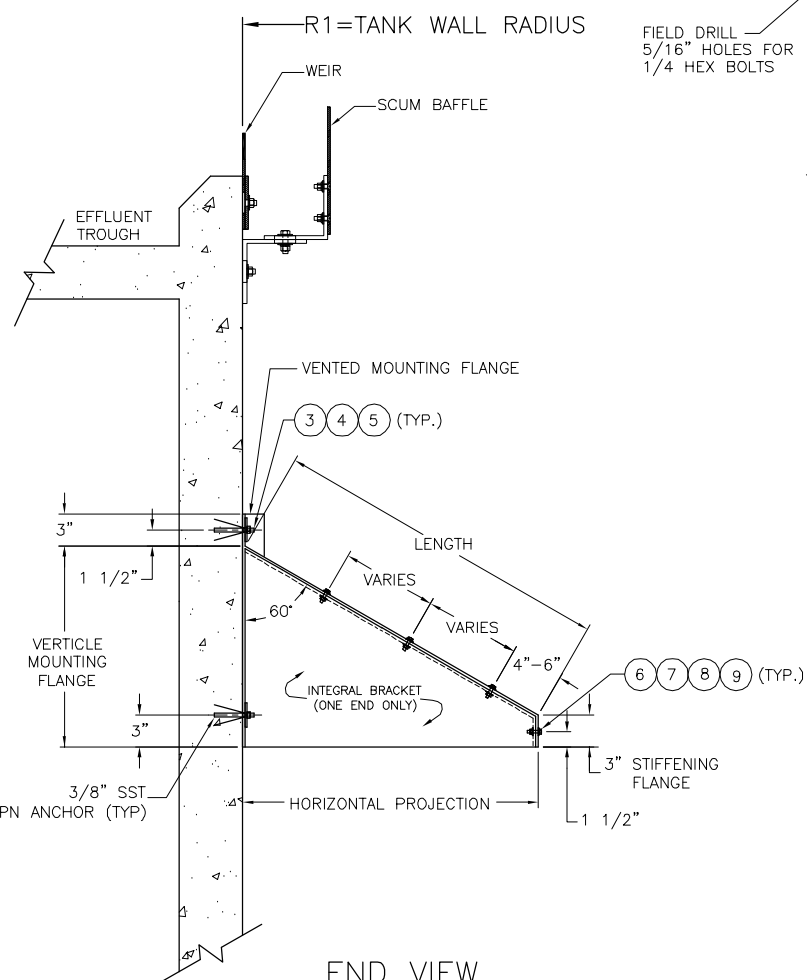
**FASTENING ADJACENT PANELS**

(NOT TO SCALE)



**TOP VIEW**

(NOT TO SCALE)



**END VIEW**

(NOT TO SCALE)

**BASIC BAFFLE INSTALLATION INSTRUCTIONS:**

**NOTE: PLEASE READ THE ALL INSTRUCTIONS BEFORE STARTING BAFFLE INSTALLATION!!! IF YOU HAVE ANY QUESTIONS, PLEASE CALL US IMMEDIATELY AT (561) 775-9303.**

THE LAUNDR MOUNTED BAFFLE PANELS ARE GENERALLY INSTALLED AROUND THE TANK PERIMETER ALONG THE INBOARD LOWER CORNER OF THE EFFLUENT LAUNDR IN A COUNTERCLOCKWISE DIRECTION AS FROM LOOKING OUTWARD FROM THE CENTER OF THE TANK.

1) EXAMINE THE PROPOSED MOUNTING LOCATION ALONG THE ENTIRE CIRCUMFERENCE OF THE TANK FOR ANY INTERFERENCE OR OBSTRUCTION.

2) IF THE TANK IS EQUIPPED WITH AN INTERNAL EFFLUENT DROP BOX THAT WILL INTERFERE WITH THE RETURN MOUNTING BRACKET OF THE BAFFLE, BEGIN BY MOUNTING THE FIRST PANEL AT THAT LOCATION. ALIGN THE VERTICAL CENTER OF THE PANEL WITH THE VERTICAL CENTER OF THE EFFLUENT DROP BOX. MAKE SURE THE RIGHT END OF THE PANEL WILL EXTEND PAST THE FACE OF THE DROP BOX FAR ENOUGH TO INSTALL THE RETURN BRACKET OF THE LAST PANEL WITH SUFFICIENT LAP. MARK THE WALL USING THE FACTORY HOLES IN THE PANEL AS A GUIDE PRIOR TO DRILLING ANCHOR MOUNTING HOLES. REMOVE THE PANEL AND DRILL WALL ANCHOR HOLES (NEVER USE THE FACTORY HOLES AS A DRILLING TEMPLATE). INSERT THE APPROPRIATE ANCHORS INTO THE HOLES, REPLACE THE PANEL AND SECURE IT TO THE WALL WITH THE HARDWARE AS SHOWN IN THE INSTALLATION DETAIL. (GO TO STEP-4).

3) IF THE TANK IS NOT EQUIPPED WITH AN INTERNAL EFFLUENT DROP BOX, BEGIN BY MOUNTING THE FREE-END BRACKET IMMEDIATELY LEFT OF THE SCUM PIPE, SCUM BOX SUPPORT BRACKET, OR OTHER OBSTRUCTION. USE THE SAME MARKING, DRILLING AND SECURING PROCEDURE AS IN STEP-2. NEXT, INSTALL THE FIRST BAFFLE PANEL LEFT OF THE PREVIOUSLY MOUNTED BRACKET MAKING SURE TO LAP THE RIGHT END OF THE PANEL ON TOP OF THE BRACKET. USE THE SAME MARKING AND DRILLING STEPS AS ABOVE. IN ADDITION TO THE MOUNTING HOLES, ALSO MARK THE LAP HOLES ON THE ADJACENT BRACKET USING THE FACTORY HOLES IN THE PANEL AS A GUIDE. AGAIN, REMOVE THE PANEL BEFORE DRILLING. (GO TO STEP-4).

4) CONTINUE INSTALLING PANELS FROM RIGHT TO LEFT UNTIL YOU REACH THE OPPOSITE SIDE OF THE FIRST PANEL INSTALLED. ACCURATELY MEASURE AND THEN FIELD CUT THE LAST BAFFLE PANEL TO FIT THE REMAINING SPACE AND INSTALL IT.

5) IF AN OBSTRUCTION OCCURS AT THE SCUM PIPE OR OTHER OBJECT, USE THE FREE END BRACKET TO STOP AND START THE BAFFLE INSTALLATION AROUND THE OBSTRUCTION BY SUPPORTING THE RIGHT END OF A WHOLE OR TRIMMED PANEL.

**NOTES:**

- ONE TANK(S), DIAMETER AT BAFFLE = XX'-XX".
- BAFFLE PANELS ARE CHOPPED STRAND FRP 1/4" MINIMUM THICKNESS.
- 357-211 PLN CTC GLASS REINFORCEMENT OR EQUIVALENT.
- COREZYN, COR75-AQ-010, ISOPHTHALIC RESIN OR EQUIVALENT, WITH MINIMUM .05% BLACK PIGMENT, MAX 5% FILL AND UV SUPPRESSED.
- LAMINATE SHALL NOT HAVE LESS THAN 30% GLASS CONTENT.
- ADD 2" DRAFT TO BRACKET ON PLUG TO COMPENSATE FOR SHRINKAGE.
- ONE-EIGHTH INCH RADIUS ON ALL CORNERS.
- UPPER BAFFLE SURFACE IS MOLD SMOOTH.
- UPPER BAFFLE SURFACE IS LAMINATED WITH ONE LAYER C-TYPE VEIL MAT.
- REINFORCE VERTICAL MOUNTING FLANGE WITH ONE LAYER OF 24 OZ WOVEN ROVING.
- PARTS SHALL BE UNIFORMLY BLACK WITH NO FIBER SHOWING.
- ALL FASTENERS ARE 304 SST UNLESS OTHERWISE NOTED.
- TANK MOUNTING HOLES ARE FACTORY DRILLED (1/2") AND SEALED.
- SEAL ALL CUT EDGES PER MANUFACTURER'S DIRECTIONS.
- ALL FASTENERS ARE 304 SST UNLESS OTHERWISE NOTED.
- EACH BAFFLE SHALL HAVE THE FOLLOWING MINIMUM PHYSICAL PROPERTIES:

PROPERTY	TEST	MINIMUM VALUE
TENSILE STRENGTH	ASTM D-638	12,000 PSI
FLEXURAL STRENGTH	ASTM D-790	20,000 PSI
FLEXURAL MODULUS	ASTM D-790	1.0x10 <sup>6</sup> PSI
NOTCHED IZOD IMPACT	ASTM D-256	12 FT-LBS/IN
BARCOL HARDNESS	ASTM D-2583	40
WATER ABSORPTION	ASTM D-570	0.2%

© COPYRIGHT 2009 NEFCO, INC.

**PATENTS**  
U.S. PATENT NO.s 5,252,205 & 5,597,483  
CANADIAN PATENT NO. 2,100,380

MATERIALS / TANK		
ITEM	QTY.	DESCRIPTION
1	XX	BAFFLE PANELS
2	1	FREE END BRACKET
3	XXX	3/8" X 3-3/4" EXPANSION ANCHORS
4	XXX	3/8" OVERSIZED FLAT WASHERS
5	XXX	3/8" HEX NUTS
6	XXX	1/4-20 X 1-1/4" HEX BOLT
7	XXX	1/4" FENDER WASHER
8	XXX	1/4" LOCK WASHER
9	XXX	1/4" HEX NUT

REVISIONS:	NO.	DATE	DETAILS

**NEFCO, INC.**  
4362 NORTHLAKE BLVD., STE 213  
PALM BEACH GARDENS, FL 33410  
(561) 775-9303  
www.nefcoinnovations.com



PROJECT:	TYPICAL WALL MOUNTED STAMFORD BAFFLE 2.0"	P.O.
TITLE:	UNDER 36"	
CONTRACTOR:		
ENGINEER:		

DWG BY:		
CHK BY:		TJK
PRJ MG:		
SCALE:		N.T.S.
DATE:		5-11-2010

DWG NO.	TYPICAL-1
SHEET NO.	1 OF 1