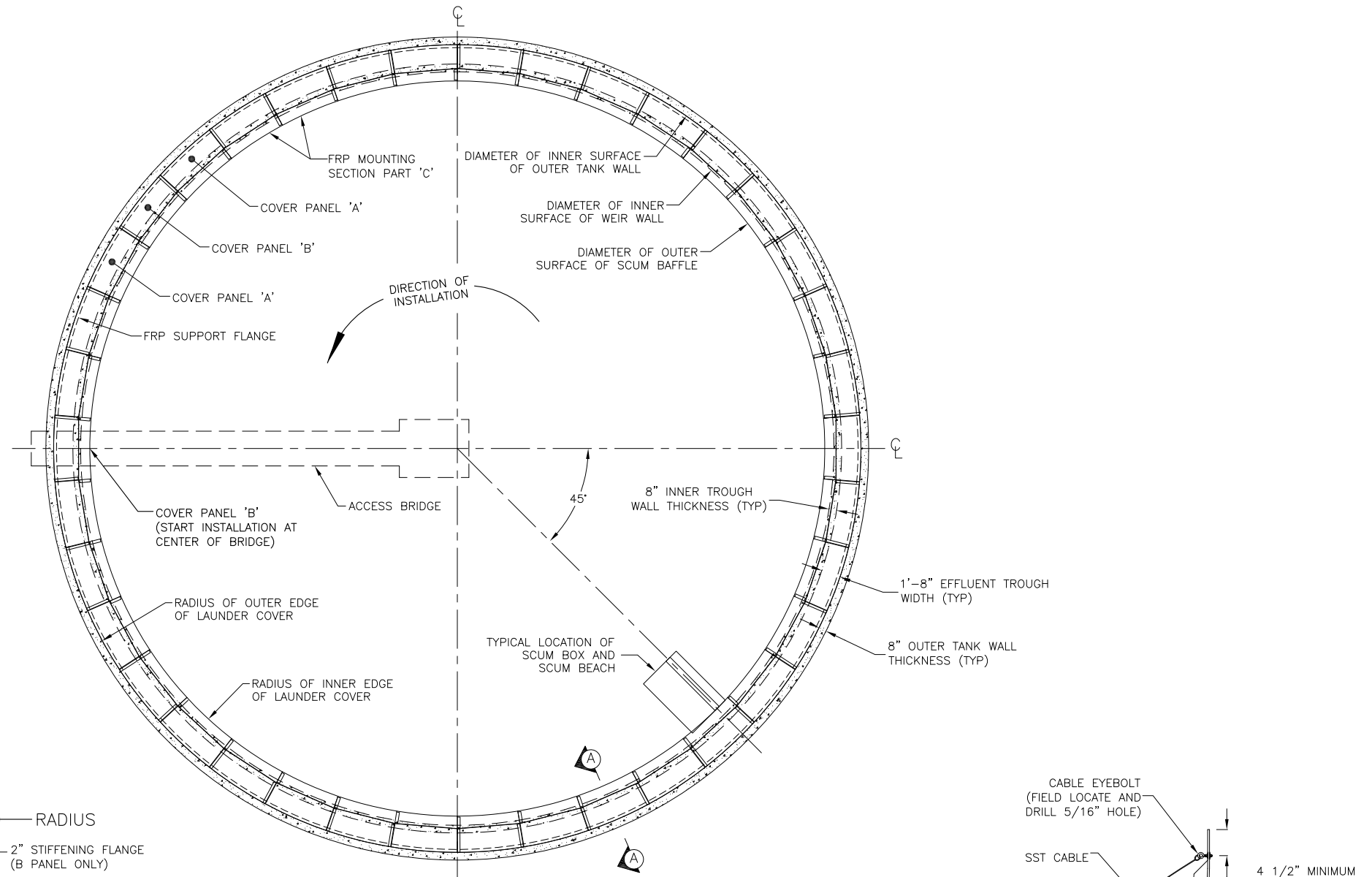
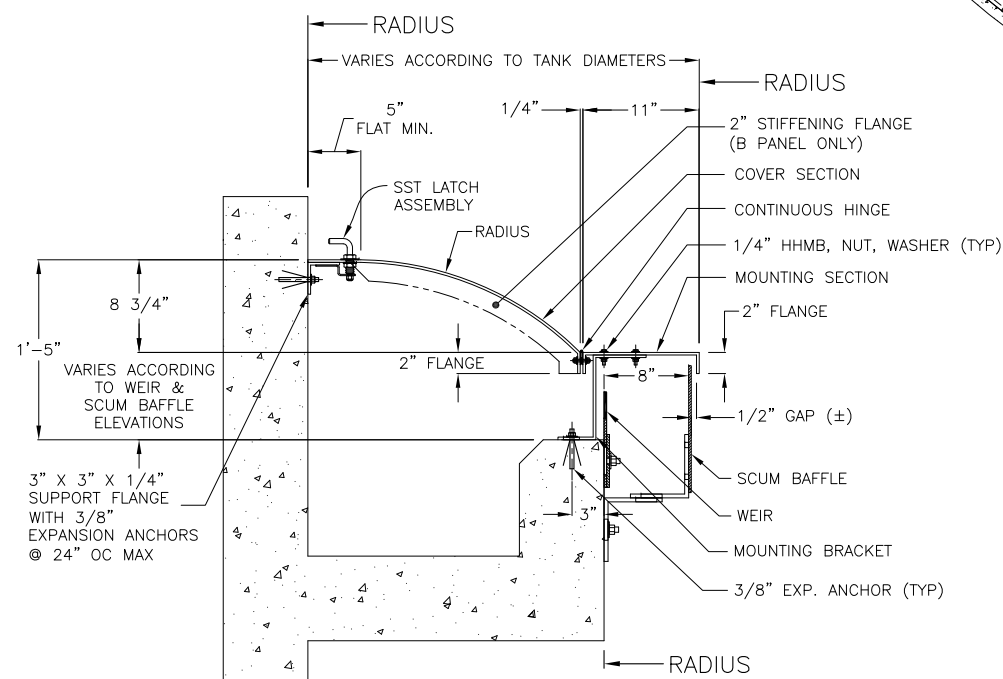


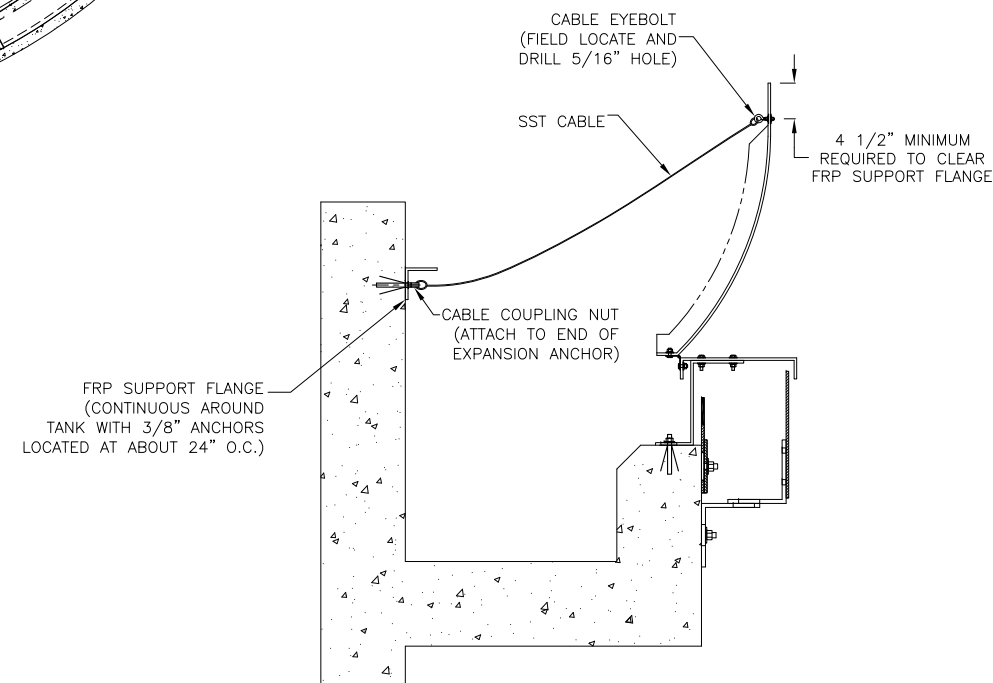
ISOMETRIC



COVER LAYOUT PLAN VIEW
(NO SCALE)



SECTION A-A



COVER CABLE RESTRAINT ASSEMBLY
(XX PCS/TANK - XX TOTAL)

REVISIONS:

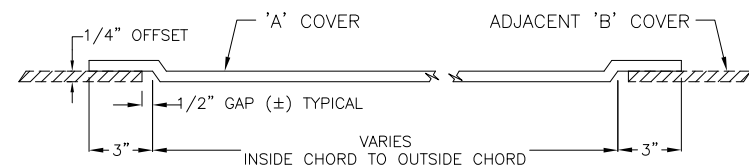
NO.	DATE	DETAILS

NEFCO, INC.
4362 NORTHLAKE BLVD., STE 213
PALM BEACH GARDENS, FL 33410
(561) 775-9303
www.nefcoinnovations.com

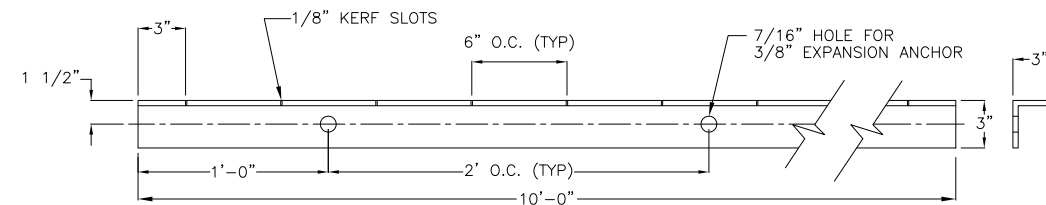


PROJECT: _____
TITLE: WEIR-WALL MOUNTED EFFLUENT LAUNDER COVERS FOR
XXXXX (SECTION ###)
CONTRACTOR: _____
ENGINEER: _____ P.O. _____

DWG BY: ---
CHK BY: TJK
PRJ MG: ---
SCALE: N.T.S.
DATE: 2-17-2011
DWG NO. _____
SHEET NO. 1 OF 2

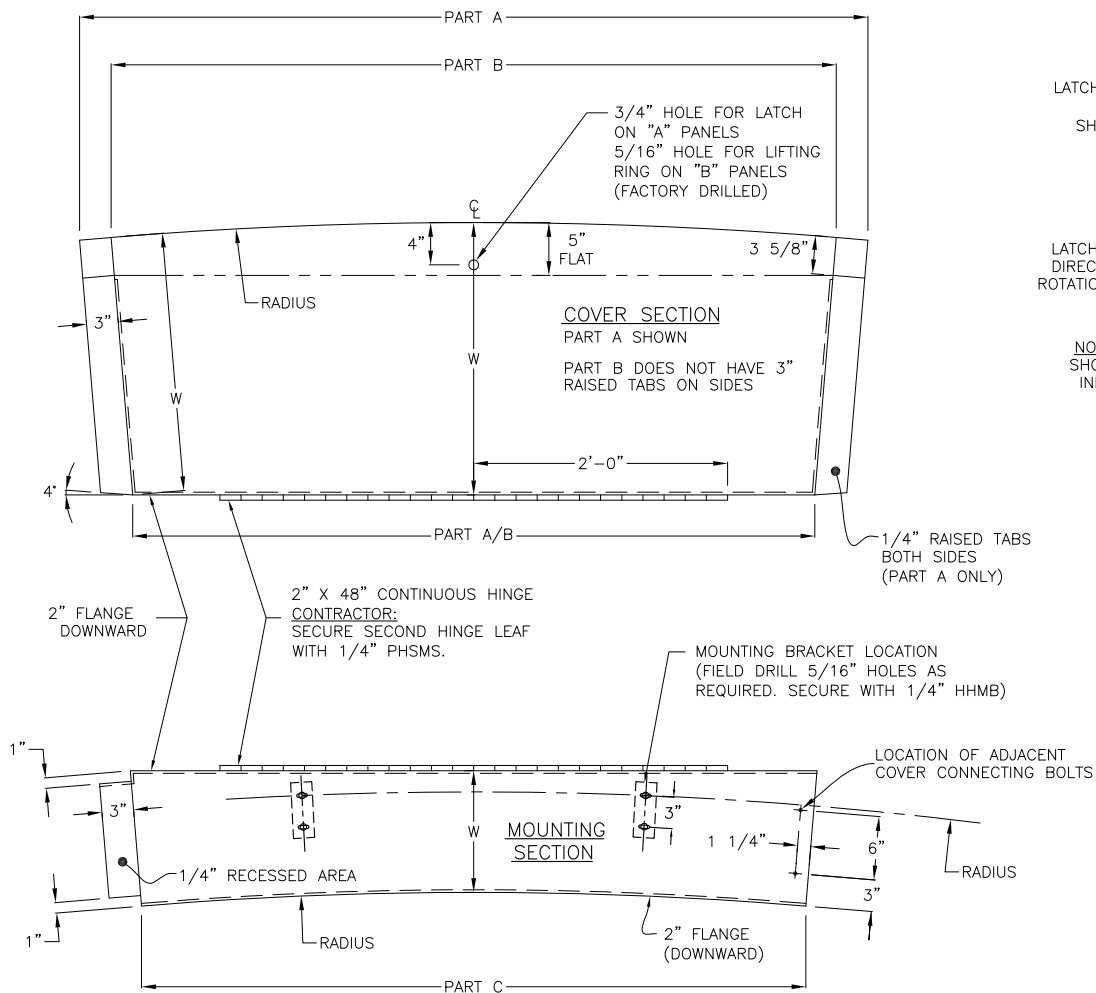


RAISED TAB PROFILE



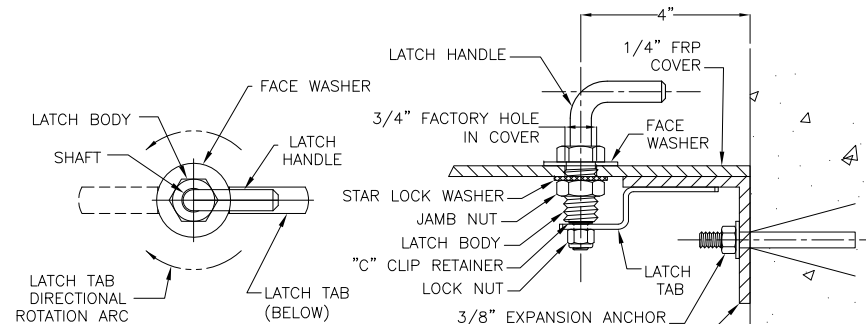
FRP SUPPORT FLANGE

(XX PCS/TANK - XX TOTAL)



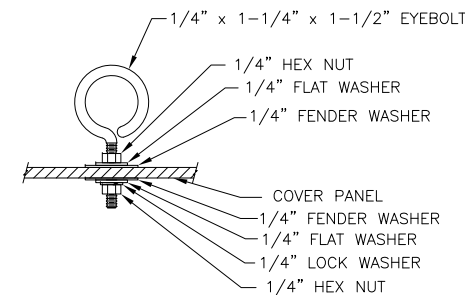
LAUNDRER COVER PANEL UNIT

TOP VIEW



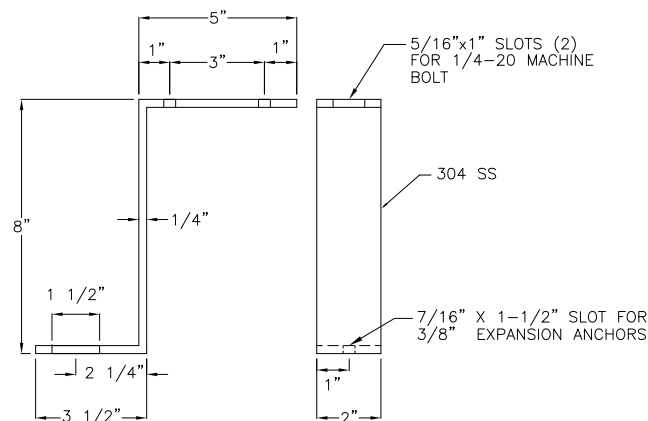
"A" PANEL LATCH

(XX PCS/TANK - XX TOTAL)



"B" PANEL LIFTING RING

(XX PCS/TANK - XX TOTAL)



MOUNTING BRACKET

(2 PER PANEL UNIT - XX PCS/TANK - XX TOTAL)

NOTES:

- ONE TANK(S), DIAMETER AT COVER = ϕ XX'-X"
- COVER PANELS ARE CHOPPED STRAND FRP WITH 1/4" MINIMUM THICKNESS.
- MINIMUM 20 MIL GELCOAT ON UPPER PANEL SURFACE. COLOR IS MARINE WHITE.
- 357-211 PLN CTC GLASS REINFORCEMENT OR EQUIVALENT. ADDITIONAL SUPPORT/REINFORCEMENT AS REQUIRED.
- COREZYN, COR75-AQ-010, ISOPHTHALIC RESIN OR EQUIVALENT, WITH MINIMUM .05% BLACK PIGMENT, MAX 5% FILL AND UV SUPPRESSED.
- PARTS SHALL BE OPAQUE BLACK BENEATH GELCOAT SURFACE, WITH NO FIBER SHOWING.
- LAMINATE SHALL NOT HAVE LESS THAN 30% GLASS CONTENT
- ONE-EIGHTH INCH RADIUS IN ALL CORNERS
- PARTS ARE KNIFE TRIMMED, WITH EDGES SANDED AND HOT COATED.
- MOUNTING HOLES ARE FIELD DRILLED (5/16").
- ALL FASTENERS ARE 304 SST UNLESS OTHERWISE NOTED
- FIELD CUT PANELS AS REQUIRED PER MANUFACTURERS INSTRUCTIONS.
- EACH PANEL SHALL HAVE THE FOLLOWING MINIMUM PHYSICAL PROPERTIES:

PROPERTY	TEST	MINIMUM VALUE
TENSILE STRENGTH	ASTM D-638	12,000 PSI
FLEXURAL STRENGTH	ASTM D-790	20,000 PSI
FLEXURAL MODULUS	ASTM D-790	1.0x10 ⁶ PSI
NOTCHED IZOD IMPACT	ASTM D-256	12 FT-LBS/IN
BARCOL HARDNESS	ASTM D-2583	40
WATER ABSORPTION	ASTM D-570	0.2%

© COPYRIGHT 2011 NEFCO, INC.

PATENTS:

U.S. PATENT NO.'S 5,965,023
6,216,881
6,712,222

MATERIALS / TANK		
ITEM	QTY.	DESCRIPTION
1	XX	FRP COVER SECTIONS - PART A (WITH TABS)
2	XX	FRP COVER SECTIONS - PART B (WITHOUT TABS)
3	XX	FRP MOUNTING SECTIONS - PART C
4	XX	FRP SUPPORT FLANGE
5	XX	SST MOUNTING BRACKETS
6	XX	SST LATCH
7	XX	SST LIFTING RING
8	XXX	SST 3/8" X 3 3/4" EXP. ANCHOR, NUT, WASHER
9	XX	SST 2-1/2" X 48" CONTINUOUS HINGE WITH 1/4" X 3/4" PANHEAD SLDT MACHINE SCREW, NUT, WASHER, LOCK WASHER
10	XXX	SST 1/4 X 1 1/4" HHMB, NUT, (2) WASHERS, LOCK WASHER
11	XX	SST 1/8" X 4'-2" COVER RESTRAINT ASSEMBLY

REVISIONS:	NO.	DATE	DETAILS

NEFCO, INC.
4362 NORTHLAKE BLVD., STE 213
PALM BEACH GARDENS, FL 33410
(561) 775-9303
www.nefcoinnovations.com



PROJECT: _____
TITLE: WEIR-WALL MOUNTED EFFLUENT LAUNDRER COVERS FOR
XXXXX (SECTION ###)
CONTRACTOR: _____
ENGINEER: _____
P.O. _____

DWG BY: ---
CHK BY: TJK
PRJ MG: ---
SCALE: N.T.S.
DATE: 2-17-2011
DWG NO. TYPICAL
SHEET NO: 2 OF 2