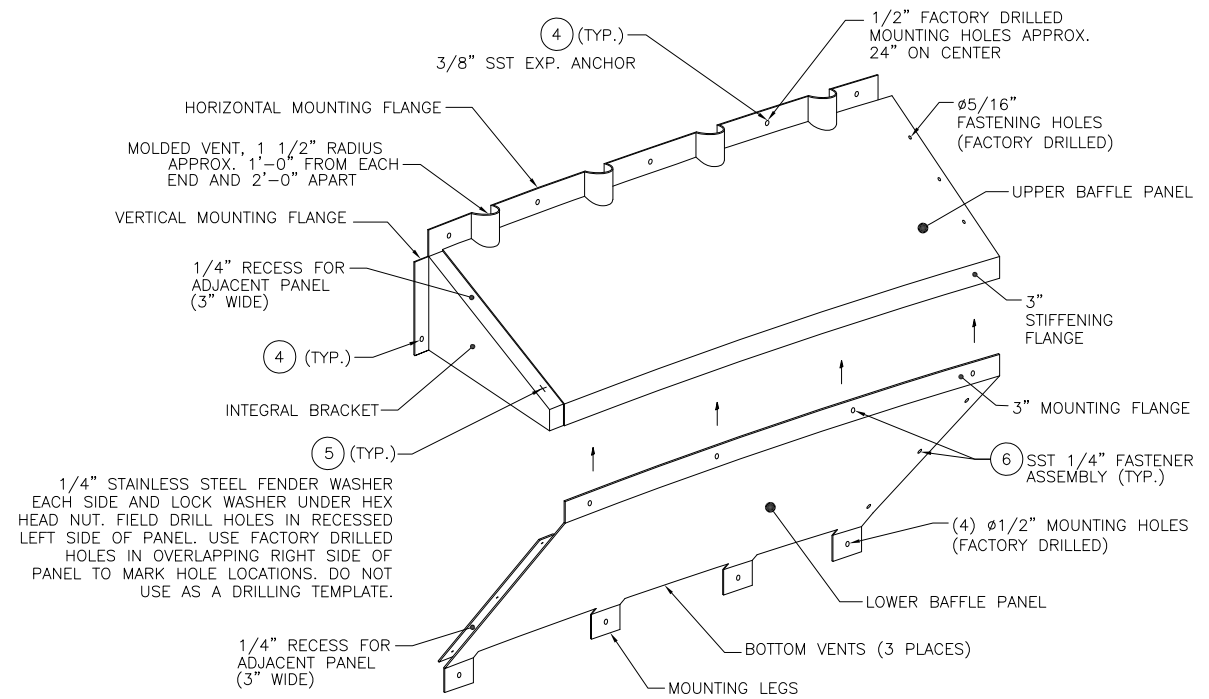
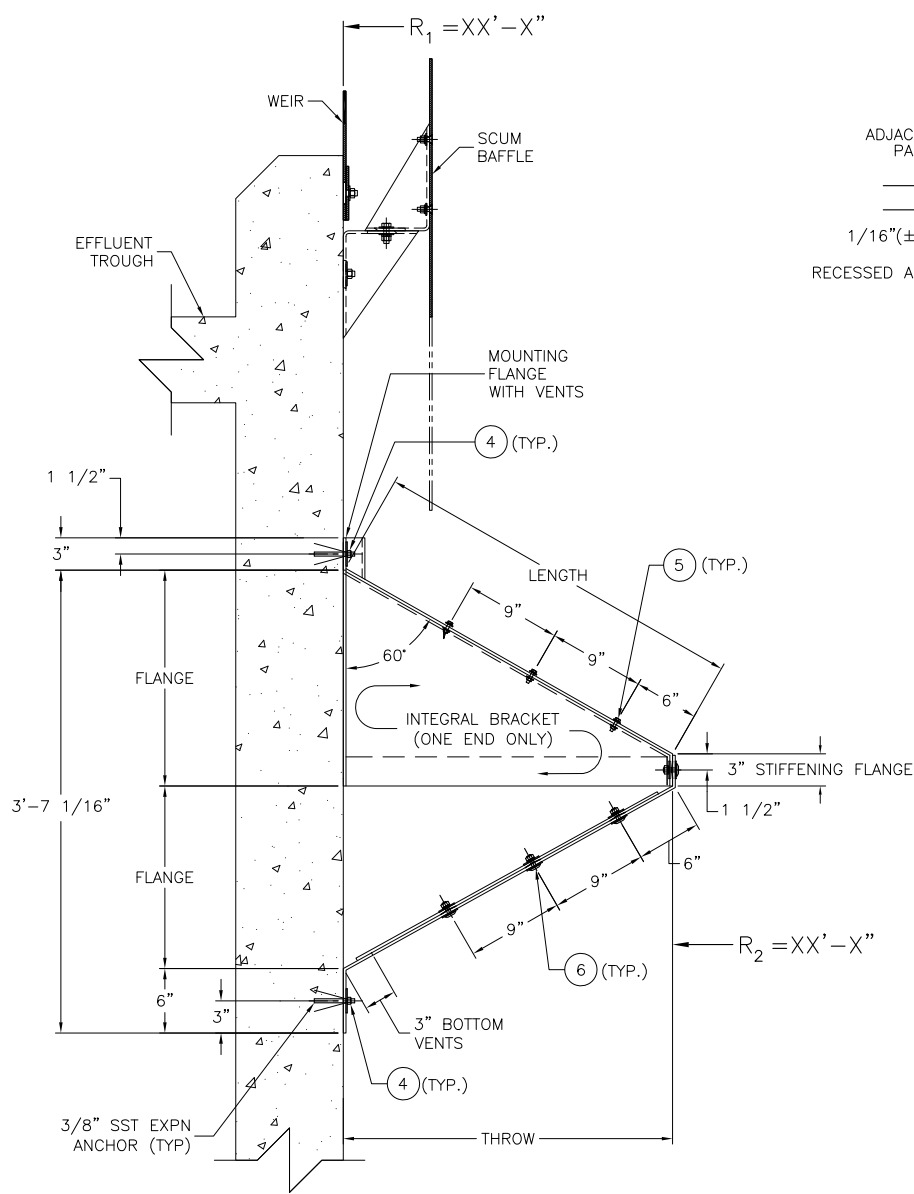


FREE-END BRACKET

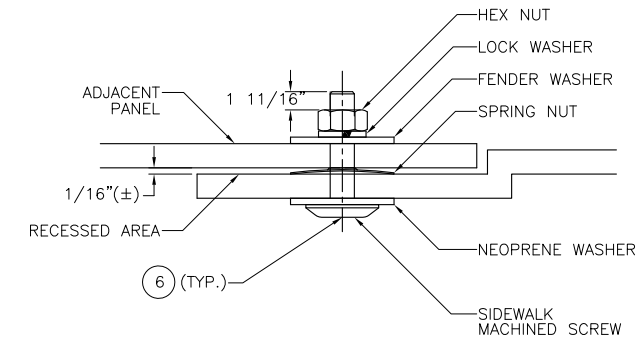


PERSPECTIVE VIEW

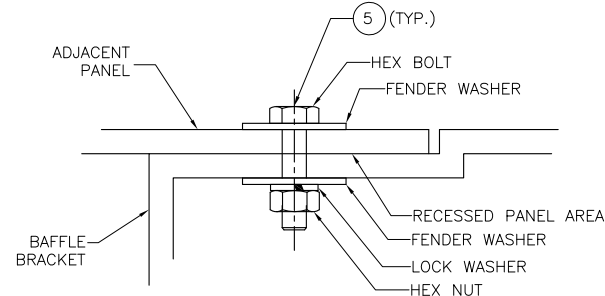
1/4" STAINLESS STEEL FENDER WASHER EACH SIDE AND LOCK WASHER UNDER HEX HEAD NUT. FIELD DRILL HOLES IN RECESSED LEFT SIDE OF PANEL. USE FACTORY DRILLED HOLES IN OVERLAPPING RIGHT SIDE OF PANEL TO MARK HOLE LOCATIONS. DO NOT USE AS A DRILLING TEMPLATE.



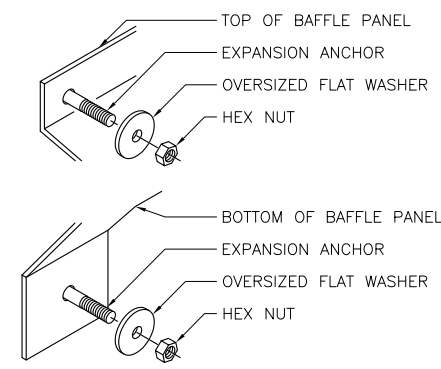
SECTION A-A
END VIEW



FASTENING ADJACENT LOWER PANELS



FASTENING ADJACENT UPPER PANELS



WALL MOUNTING INSTALLATION

NOTES:

- THREE TANKS, DIAMETER AT BAFFLE = XX'-X".
- BAFFLE PANELS ARE CHOPPED STRAND FRP 1/4" MINIMUM THICKNESS.
- 357-211 PLN CTC GLASS REINFORCEMENT OR EQUIVALENT. COREZYN, COR75-AQ-010, ISOPHTHALIC RESIN OR EQUIVALENT, WITH MINIMUM .05% BLACK PIGMENT, MAX 5% FILL AND UV SUPPRESSED.
- LAMINATE SHALL NOT HAVE LESS THAN 30% GLASS CONTENT. ADD 2" DRAFT TO BRACKET ON PLUG TO COMPENSATE FOR SHRINKAGE.
- ONE-EIGHTH INCH RADIUS ON ALL CORNERS.
- UPPER BAFFLE SURFACE IS MOLD SMOOTH.
- UPPER BAFFLE SURFACE IS LAMINATED WITH ONE LAYER C-TYPE VEIL MAT.
- THE RETURN MOUNTING FLANGE REINFORCED WITH ONE LAYER 24 OZ WOVEN ROVING.
- PARTS SHALL BE UNIFORMLY GREEN WITH NO FIBER SHOWING.
- PARTS ARE KNIFE TRIMMED, WITH EDGES SANDED AND HOT COATED.
- TANK MOUNTING HOLES ARE FACTORY DRILLED (1/2") AND SEALED.
- SEAL ALL CUT EDGES PER MANUFACTURER'S DIRECTIONS.
- ALL FASTENERS ARE 304 SST UNLESS OTHERWISE NOTED.
- EACH FRP SHAPE SHALL HAVE THE FOLLOWING MINIMUM PHYSICAL PROPERTIES:

PROPERTY	TEST	MINIMUM VALUE
TENSILE STRENGTH	ASTM D-638	12,000 PSI
FLEXURAL STRENGTH	ASTM D-790	20,000 PSI
FLEXURAL MODULUS	ASTM D-790	1.0x10 ⁶ PSI
NOTCHED IZOD IMPACT	ASTM D-256	12 FT-LBS/IN
BARCOL HARDNESS	ASTM D-2583	40
WATER ABSORPTION	ASTM D-570	0.2%

© COPYRIGHT 2007 NEFCO, INC.

PATENTS	U.S. PATENT NO.	5,252,205
		5,597,483
	CANADIAN PATENT NO.	2,100,380

MATERIALS / TANK		
ITEM	QTY.	DESCRIPTION
1	X	UPPER BAFFLE PANELS
2	X	LOWER BAFFLE PANELS
3	1	FREE END BRACKET
4	X	3/8" X 3-3/4" EXPANSION ANCHORS, OVERSIZED FLAT WASHERS, HEX NUTS
5	X	1/4"-20 X 1-1/4" HEX BOLT, 1/4" LOCK WASHER, 1/4" HEX NUT
6	X	1/4" SIDEWALK MACHINED SCREW, NEOPRENE WASHER, SPRING NUT, FENDER WASHER, LOCK WASHER, NUT

REVISION:

NEFCO, INC.
4362 NORTHLAKE BLVD. SUITE 213
PALM BEACH GARDENS, FL 33410
(561) 775-9303

ENGINEER: _____
ENGINEER

CONTRACTOR: _____
CONTRACTOR

PURCHASE ORDER: _____
PO#

PROJECT NAME: _____
PROJECT NAME

TITLE: _____
WALL MOUNTED
ADVANCED DENSITY
CURRENT BAFFLE
FOR XXXX
(SECTION XXXXX)

DWG BY: XXX
CHK BY: ZDR
PRJ MG: ZDR
SCALE: N.T.S
DATE: X-X-09

DWG NO. 295XX-X
SHEET NO: 1 OF 2

REVISION:

NEFCO, INC.
 4362 NORTHLAKE BLVD. SUITE 213
 PALM BEACH GARDENS, FL 33410
 (561) 775-9303



ENGINEER:
 ENGINEER

CONTRACTOR:
 CONTRACTOR

PURCHASE ORDER:
 PO#

PROJECT NAME:
 PROJECT NAME

TITLE:
 WALL MOUNTED
 ADVANCED DENSITY
 CURRENT BAFFLE
 FOR XXXX
 (SECTION XXXXX)

DWG BY: XXX
 CHK BY: ZDR
 PRJ MG: ZDR
 SCALE: N.T.S
 DATE: X-X-09

DWG NO. 295XX-X
 SHEET NO: 2 OF 2

BASIC BAFFLE INSTALLATION INSTRUCTIONS:
NOTE: PLEASE READ THE ENTIRE INSTRUCTIONS BEFORE STARTING THE BAFFLE INSTALLATION!!! IF YOU HAVE ANY QUESTIONS, PLEASE CALL US IMMEDIATELY AT (561) 775-9303. THE BAFFLE PANELS ARE GENERALLY INSTALLED IN A COUNTERCLOCKWISE MANNER TO THE INSIDE SURFACE OF THE TANK WALL ALONG THE CIRCUMFERENCE AS IF LOOKING OUTWARD FROM THE CENTER.

UPPER BAFFLE PANEL INSTALLATION

1) EXAMINE THE PROPOSED LOCATION ALONG THE ENTIRE PERIMETER OF THE TANK AT THE PROPER ELEVATION FOR ANY INTERFERENCE OR OBSTRUCTION.

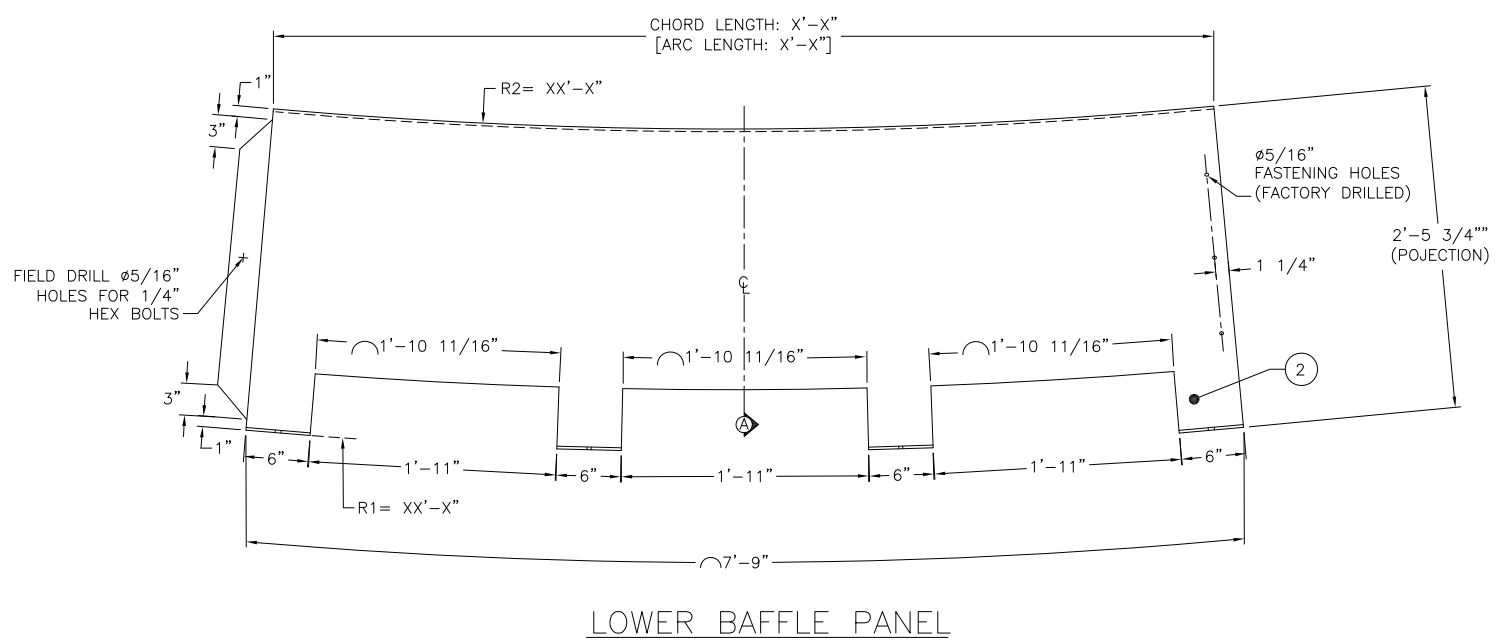
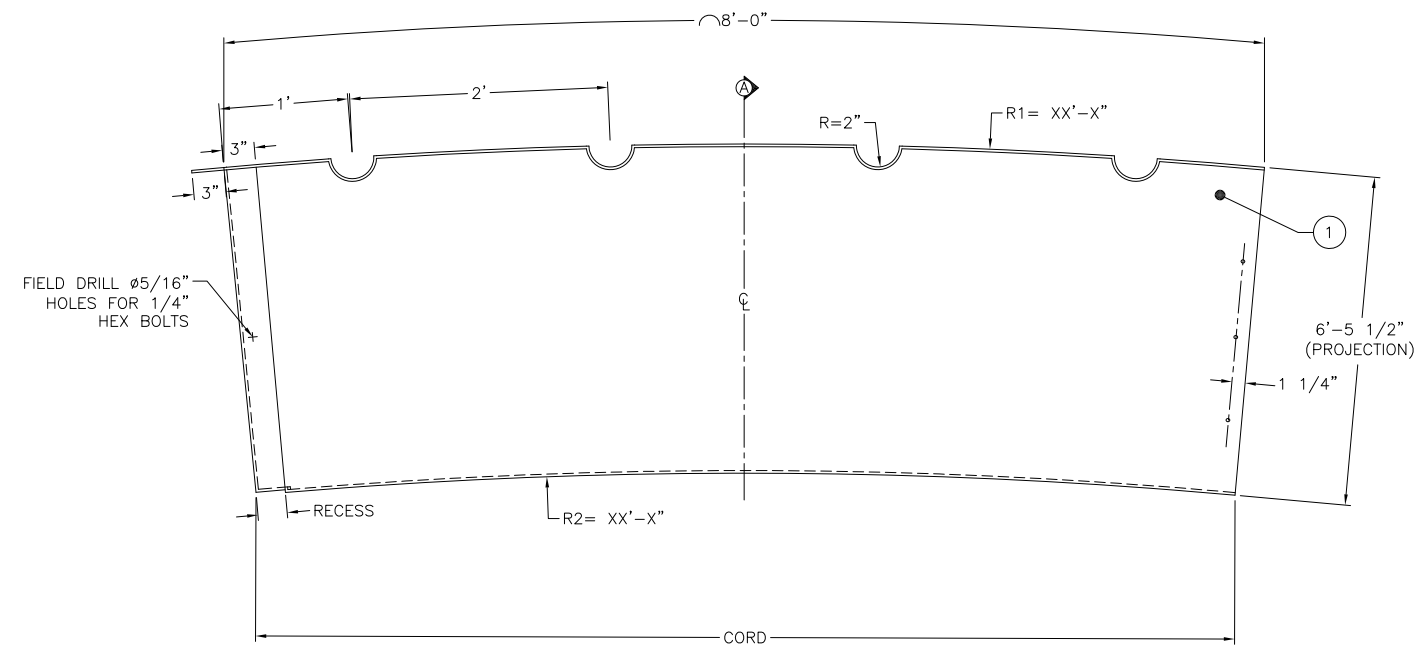
2) IF NO OBSTRUCTION EXISTS, BEGIN THE INSTALLATION BY MOUNTING THE FIRST UPPER BAFFLE PANEL AT THE PROPER ELEVATION RANDOMLY AT SOME POINT ALONG THE PERIMETER OF THE TANK WALL. USE THE FACTORY MOUNTING HOLES IN THE PANEL AS A GUIDE TO MARK THE WALL PRIOR TO DRILLING THE ANCHOR MOUNTING HOLES. REMOVE THE PANEL AND DRILL THE WALL ANCHOR HOLES (NEVER USE THE FACTORY HOLES AS A DRILLING TEMPLATE). INSERT THE APPROPRIATE ANCHORS INTO THE HOLES, REPLACE THE PANEL AND SECURE IT TO THE WALL WITH THE HARDWARE AS SHOWN IN THE INSTALLATION DETAIL. MOVE TO THE LEFT AND MOUNT THE NEXT PANEL SIMILAR TO THE FIRST. IN ADDITION TO THE MOUNTING HOLES, ALSO MARK THE LAP HOLES ON THE RECESS OF THE INTEGRAL BRACKET OF THE FIRST PANEL MOUNTED USING THE FACTORY HOLES IN THE RIGHT SIDE OF THE SECOND PANEL AS A GUIDE. CONTINUE INSTALLING THE UPPER BAFFLE PANELS FROM RIGHT TO LEFT USING THE SAME STEPS UNTIL YOU REACH THE OPPOSITE SIDE OF THE FIRST PANEL INSTALLED. ACCURATELY MEASURE AND THEN FIELD CUT THE LAST UPPER BAFFLE PANEL TO FIT THE REMAINING SPACE AND INSTALL.

3) IF AN OBSTRUCTION DOES EXIST LIKE THE EFFLUENT BOX OR SCUM PIPE, BEGIN BY MOUNTING THE FREE END BRACKET AT THE DESIRED ELEVATION TO THE LEFT SIDE OF THE OBSTRUCTION. INSTALL THE FIRST BAFFLE PANEL TO THE LEFT SIDE OF THE FREE END BRACKET USING THE SAME METHOD AS IN STEP-1 ABOVE. LAP THE RIGHT SIDE OF THE PANEL ON TOP OF THE FREE END BRACKET. MARK THE LAP HOLES ON THE FREE END BRACKET USING THE FACTORY HOLES IN THE RIGHT SIDE OF THE PANEL AS A GUIDE. AGAIN, REMOVE THE PANEL BEFORE DRILLING. CONTINUE INSTALLING UPPER BAFFLE PANELS FROM RIGHT TO LEFT UNTIL YOU REACH THE OPPOSITE SIDE OF THE OBSTRUCTION. ACCURATELY MEASURE AND THEN FIELD CUT THE LAST BAFFLE PANEL TO FIT THE REMAINING SPACE AND INSTALL.

LOWER BAFFLE PANEL INSTALLATION

1) START INSTALLATION AT THE FIRST UPPER BAFFLE PANEL INSTALLED.

2) USE THE FACTORY DRILLED MOUNTING AND RIVETTING HOLES IN THE LOWER BAFFLE PANEL AS A GUIDE TO MARK THE WALL AND UPPER BAFFLE PANEL PRIOR TO DRILLING THE RIVET AND ANCHOR HOLES. REMOVE THE PANEL AND DRILL THE RIVET AND WALL ANCHOR HOLES (NEVER USE THE FACTORY DRILLED HOLES AS A DRILLING TEMPLATE). INSERT THE ANCHORS AND RIVETS INTO THE APPROPRIATE HOLES, REPLACE THE PANEL AND SECURE IT TO THE WALL AND UPPER BAFFLE PANEL WITH THE HARDWARE AS SHOWN IN THE INSTALLATION DETAIL. MOVE TO THE LEFT AND MOUNT THE NEXT PANEL SIMILAR TO THE FIRST. IN ADDITION TO THE MOUNTING HOLES, ALSO MARK THE LAP HOLES ON THE RECESS OF THE FIRST LOWER BAFFLE PANEL MOUNTED USING THE FACTORY HOLES IN THE RIGHT SIDE OF THE LOWER BAFFLE PANEL BEING INSTALLED AS A GUIDE. CONTINUE INSTALLING PANELS FROM RIGHT TO LEFT USING THE SAME STEPS UNTIL YOU REACH THE OPPOSITE SIDE OF THE FIRST PANEL INSTALLED. ACCURATELY MEASURE AND THEN FIELD CUT THE LAST LOWER BAFFLE PANEL TO FIT THE REMAINING SPACE AND INSTALL.



LOWER BAFFLE PANEL